



**COMUNE DI PITIGLIANO**  
PRVINCIA DI GROSSETO

**PIANO ATTUATIVO DI INIZIATIVA PRIVATA**  
Comparto PIT06/R



Progettisti:  
Ing. Francesco Paris  
Geom. Alessandro Tallini

Proponente: Consorzio "Comparto D'Sig. Biondi Alessandro"  
Presidente Sig. Biondi Alessandro

QUADRO PROGETTUALE  
VARIANTE

TAV. n° P2

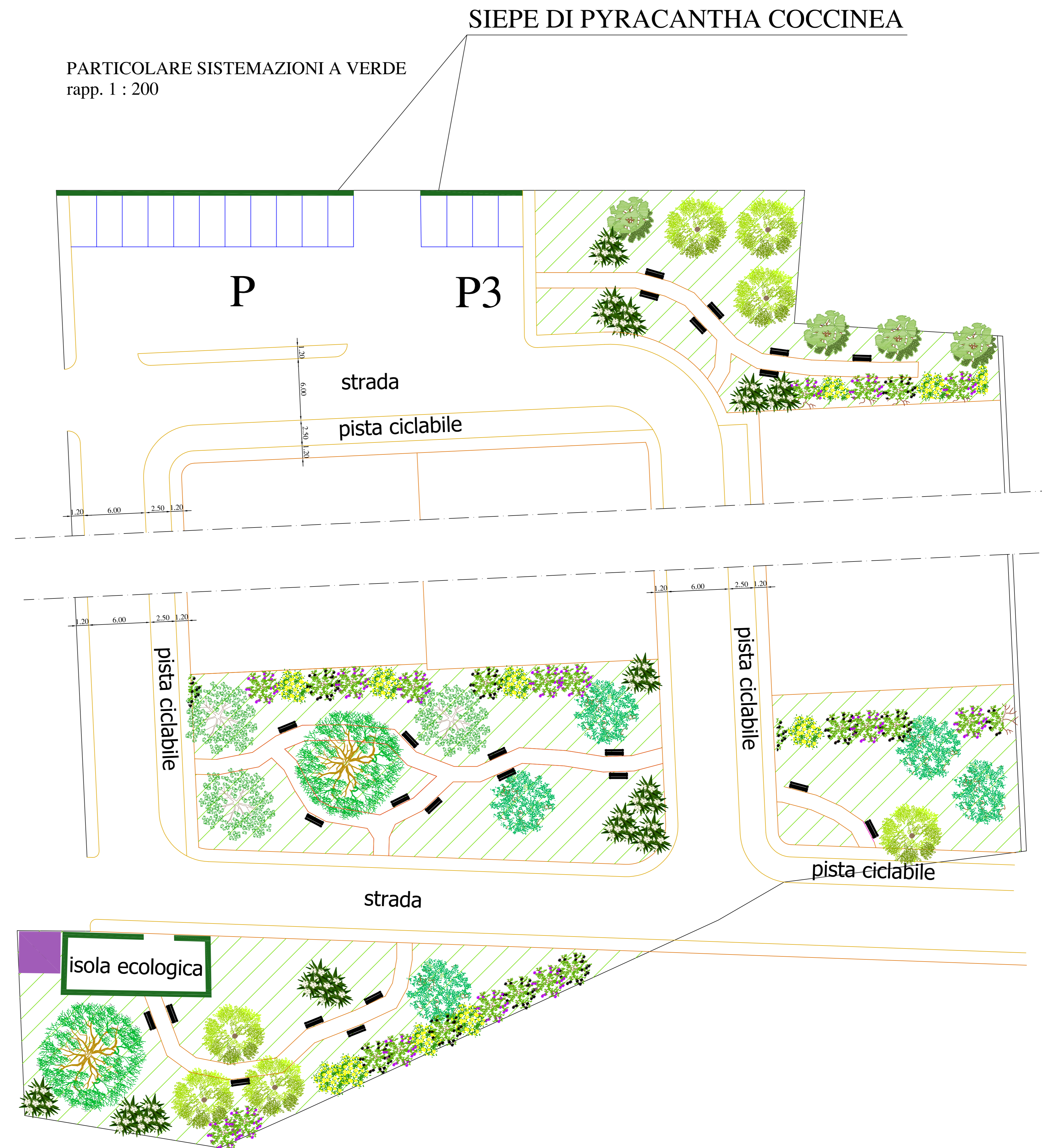
Pitigliano li \_\_\_\_\_

Sistemazioni a verde




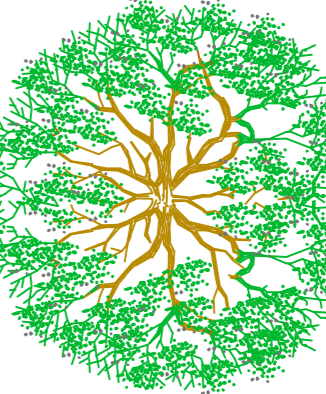
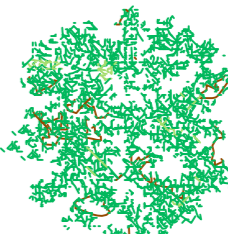

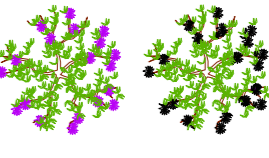


**SISTEMAZIONI A VERDE**  
rapp. 1 : 500



**PARTICOLARE SISTEMAZIONI A VERDE**  
rapp. 1 : 200



**LEGENDA**

-  CARPINO BIANCO
-  ORNIELLO
-  LECCIO
-  ROVERE
-  SALICE
-  GINESTRA COMUNE
-  OLEANDRO
-  ROSA SELVATICA
-  SIEPE DI PYRACANTHA COCCINEA