



COMUNE DI PITIGLIANO
PRVINCIA DI GROSSETO

PIANO ATTUATIVO DI INIZIATIVA PRIVATA
Comparto PIT06/R



Progettisti:
Ing. Francesco Paris
Geom. Alessandro Tallini

Proponente: Consorzio "Comparto D'Sig. Biondi Alessandro"
Presidente Sig. Biondi Alessandro

QUADRO PROGETTUALE
APPROVATO

TAV. n° P2

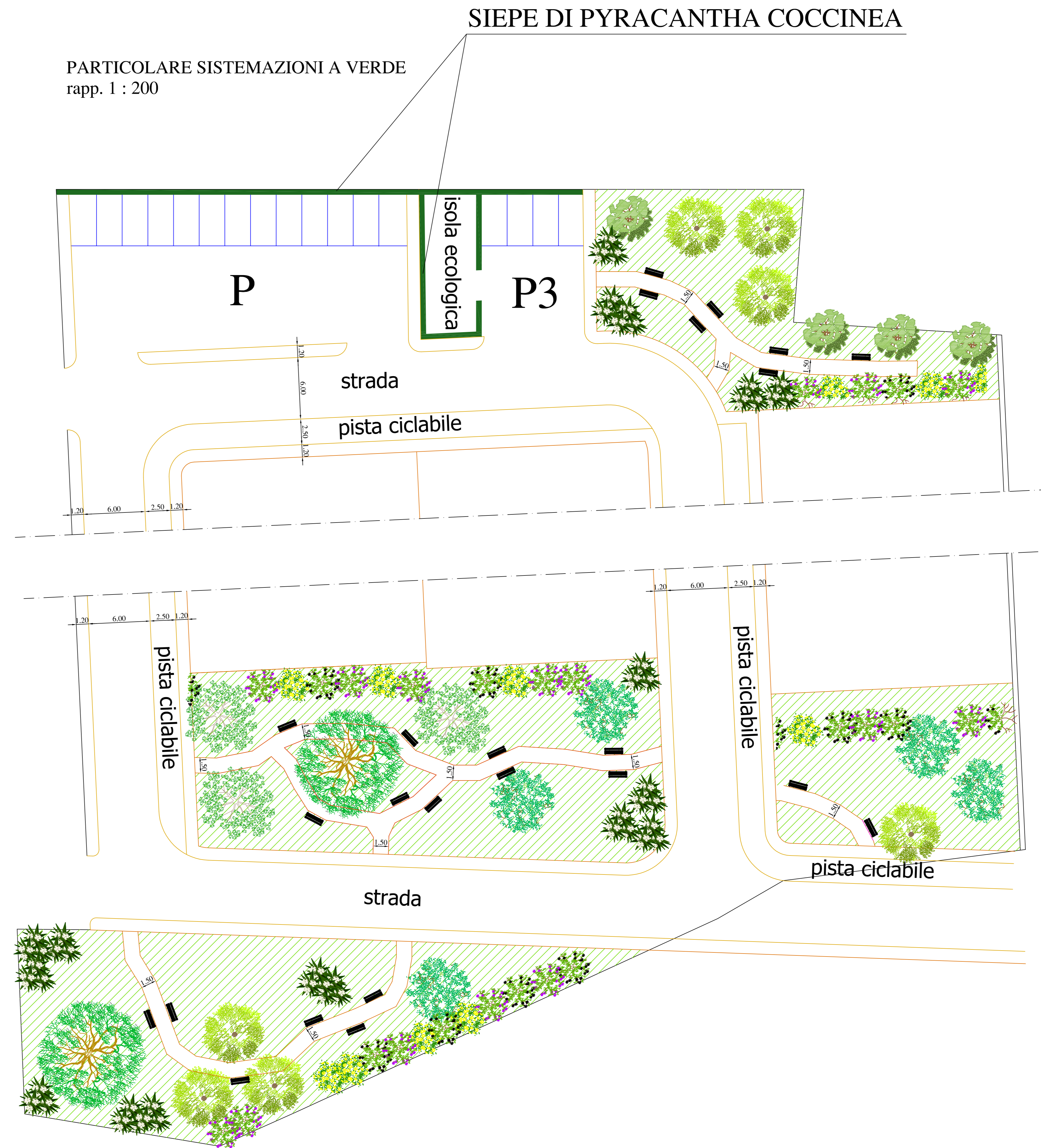
Pitigliano li _____

Sistemazioni a verde




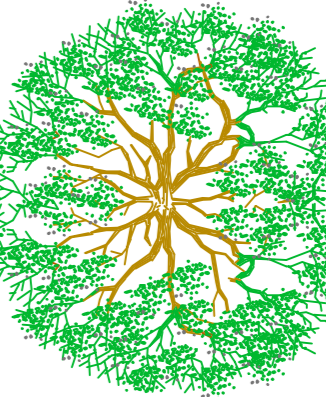
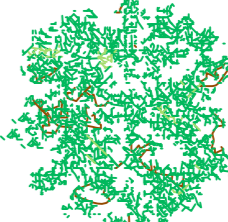




SISTEMAZIONI A VERDE
rapp. 1 : 500



PARTICOLARE SISTEMAZIONI A VERDE
rapp. 1 : 200



LEGENDA

-  CARPINO BIANCO
-  ORNIELLO
-  LECCIO
-  ROVERE
-  SALICE
-  GINESTRA COMUNE
-  OLEANDRO
-  ROSA SELVATICA
-  SIEPE DI PYRACANTHA COCCINEA